

Transforming the Golden Westside: The Role of Youth in Sustainable Brownfield Redevelopment

**STATEWIDE YOUTH
ADVOCATE NETWORK** | **FOR**
SUSTAINABLE
COMMUNITIES



Arogenane Brown, President

Fresno Youth Council for Sustainable Development

Eric Payne, Chief of Educational Programs and Development

Fresno Youth Council for Sustainable Development

Sara Russell, Brownfields Project Manager

U.S. EPA Pacific Southwest Office

Clark Henry

Senior Environmental Analyst and Planner – SRA Intl.





Background on Southwest Fresno

- 35,000 population
- 51% Poverty rate
- 45% Latino, 38% African American, 10% Hmong
- Highest Concentration of Poverty among large cities
- Lacks services, lots of low-income housing
- USDA Food Desert



Map of Fresno
Blue is City Limits
Green is Southwest Fresno





Food Desert Locator - Windows Internet Explorer

http://www.ers.usda.gov/data/fooddesert/fooddesert.html

edison high school fresno ca

Google Search More >>

Food Desert Locator edison high school fresno ca...

Food Desert Locator

Highlighted census tracts are food deserts. Click on a tract for details.

Find Address Change Background Print Map ? Help

Make tracts more/less transparent

more less

Done Internet 100%

Start Mail - Inbox - I... USDA's Food ... Dept. of Agric... Release No. 0... Food Desert... West Fresno LR Funding Ap... 11:47 AM



In 2000, Fresno ranked #4 among the 50 largest cities in the United States on its overall poverty rate...

Percentage of individuals in poverty, 2000

Source:
Brookings
calculations of U.S.
Census data

City	% poverty
1 Miami, FL	28.5
2 New Orleans, LA	27.9
3 Cleveland, OH	26.3
4 Fresno, CA	26.2
5 Atlanta, GA	26.1
6 Baltimore, MD	24.4
7 Philadelphia, PA	22.9
8 Long Beach, CA	22.9
9 El Paso, TX	22.8
10 Los Angeles, CA	22.1
NATION	12.4



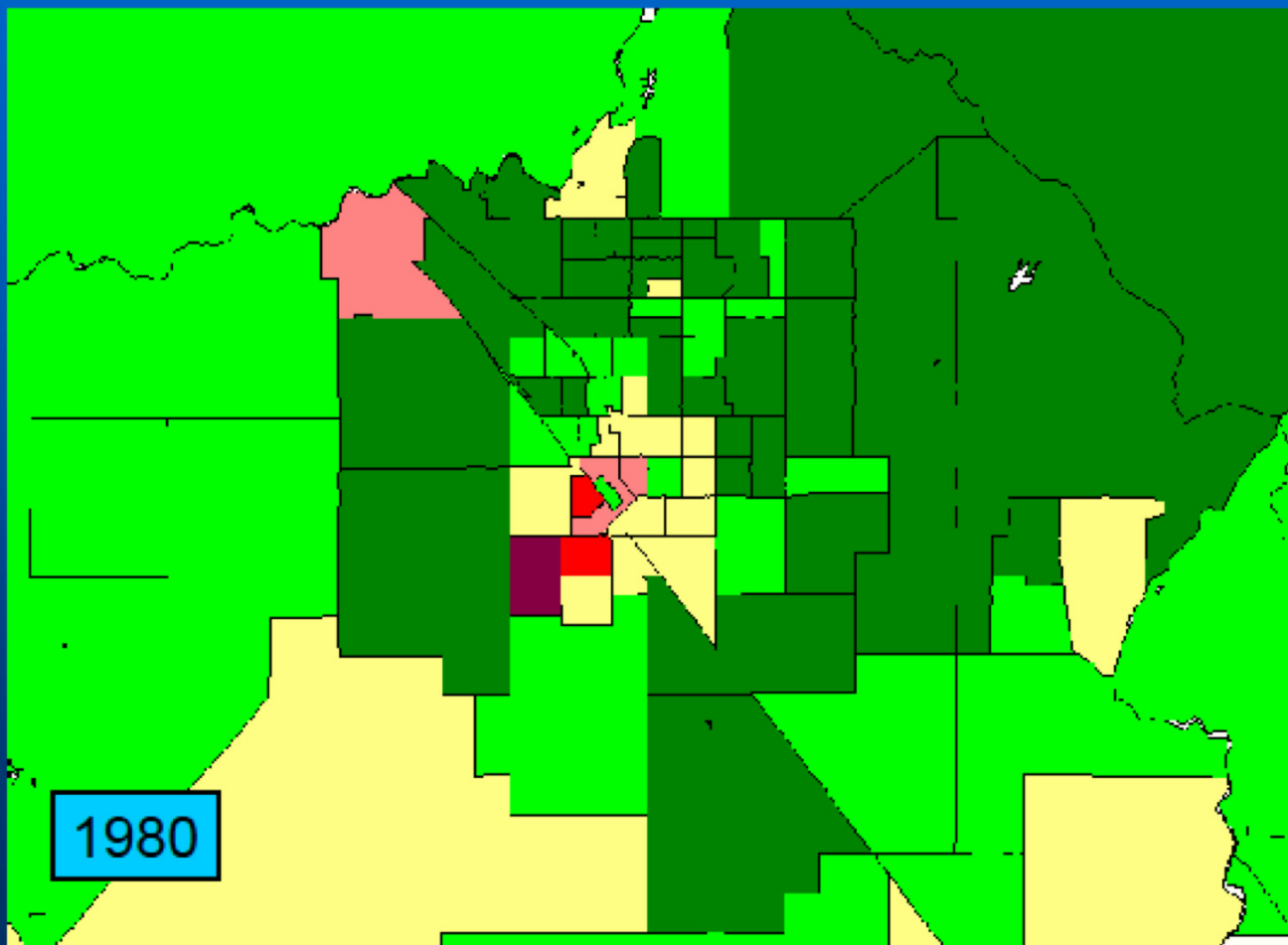
...but ranked #1 on concentrated poverty, the degree to which its poor were clustered in high-poverty neighborhoods

Percentage of poor individuals in high-poverty neighborhoods (>40%), 2000

Source:
Brookings
calculations of U.S.
Census data

City	% poverty
1 Fresno, CA	43.5
2 New Orleans, LA	37.7
3 Louisville, KY	36.7
4 Miami, FL	36.4
5 Atlanta, GA	35.8
6 Long Beach, CA	30.7
7 Cleveland, OH	29.8
8 Philadelphia, PA	27.9
9 Milwaukee, WI	27.0
10 New York, NY	25.9
NATION	10.0

Neighborhood poverty increased dramatically on the South and West sides of Fresno, especially between 1980 and 2000

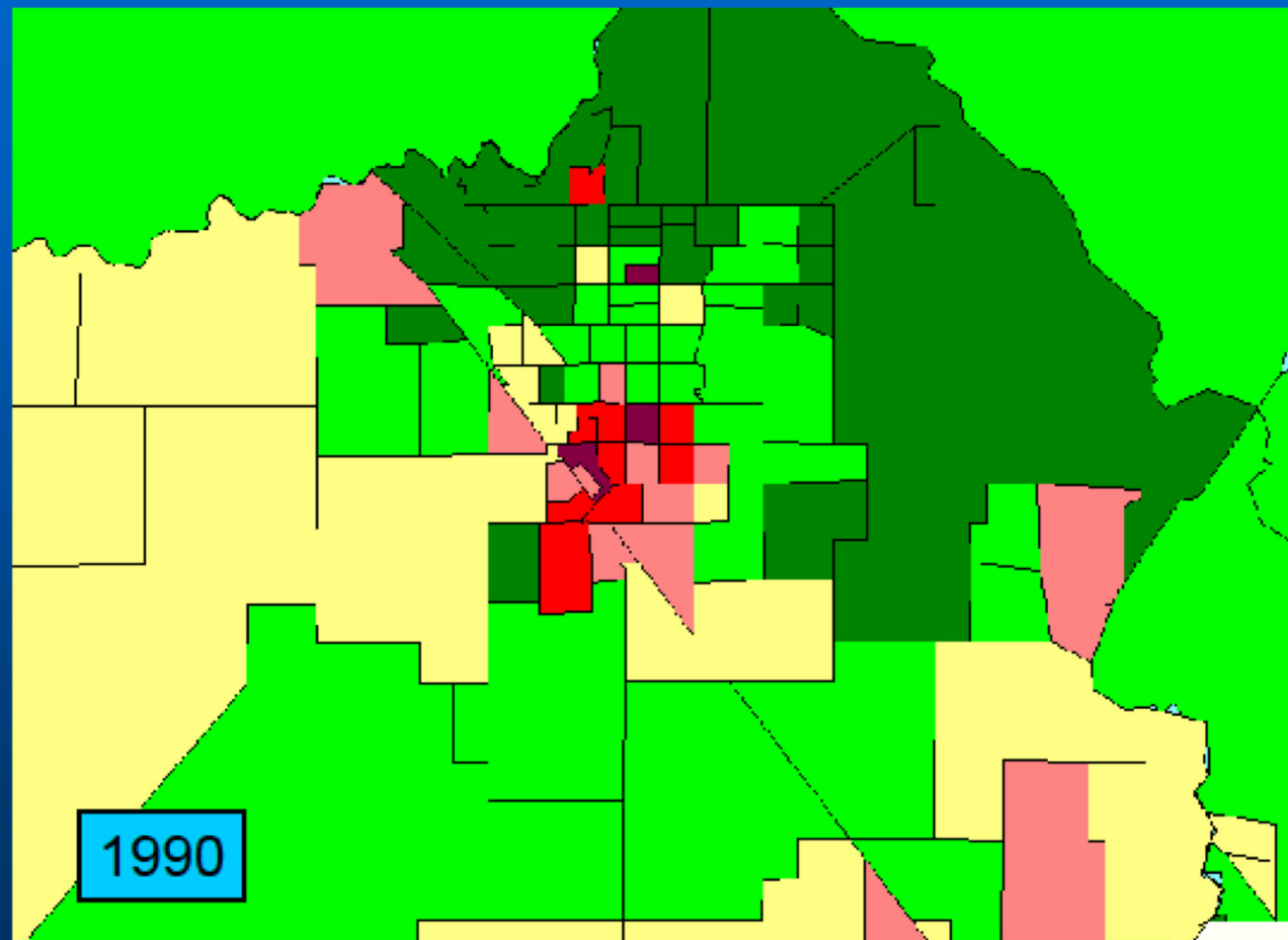


1980

Poverty Rate

0-10% 10-20% 20-30% 30-40% 40-50% Over 50%

Neighborhood poverty increased dramatically on the South and West sides of Fresno, especially between 1980 and 2000

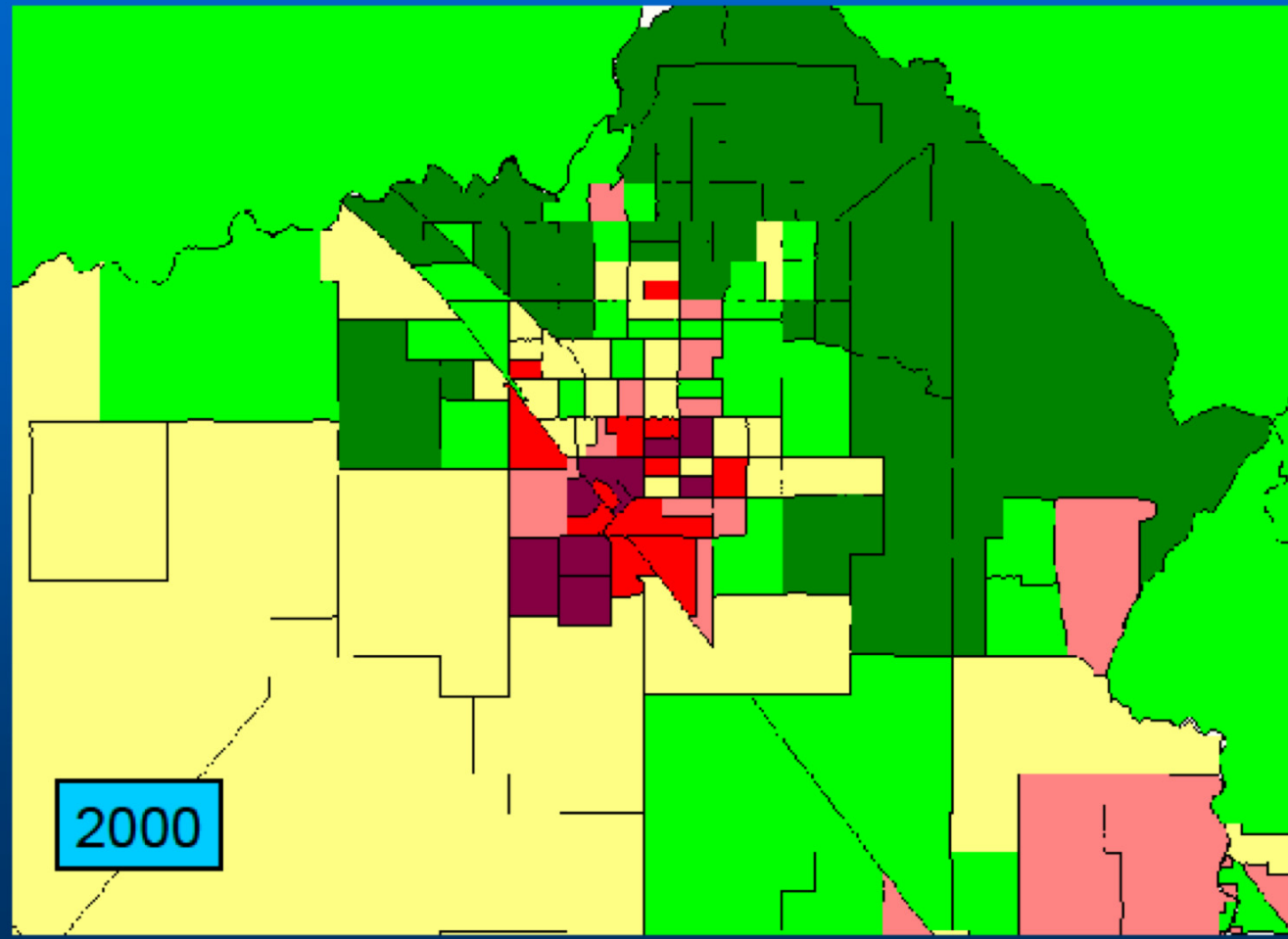


1990

Poverty Rate

0-10% 10-20% 20-30% 30-40% 40-50% Over 50%

Neighborhood poverty increased dramatically on the South and West sides of Fresno, especially between 1980 and 2000



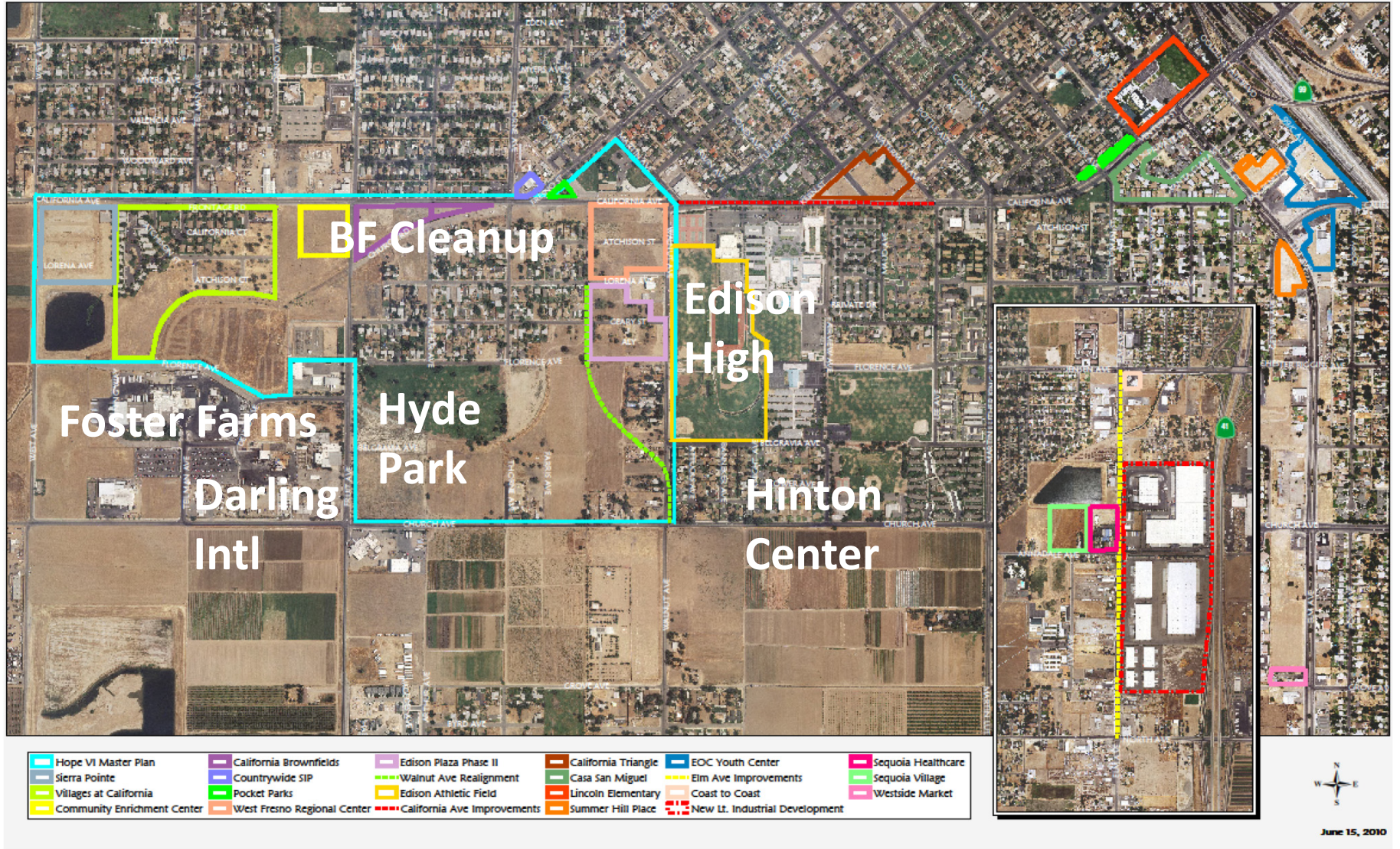
2000

Poverty Rate

- 0-10%
- 10-20%
- 20-30%
- 30-40%
- 40-50%
- Over 50%



California Avenue Revitalization Plan and Elm Avenue Improvements





Nearly \$950,000 from BF Program

- 2005 - Two Cleanup Grants: \$400K
- 2009 – TBA – Hwy 99 North Corridor: \$30K
- 2011 - TBA - Inventory of brownfields in Southwest Fresno & Downtown - 545 possible sites: \$50K
- 2011 – Transforming Golden Westside Contract: \$85K
- 2011 –Community Wide Assessment Grant to Redevelopment Agency: \$400K
- 2011-12 – Brownfields to Urban Garden: \$30K



Transforming the Golden Westside

- Contract support, \$85K - \$55 Office of Sustainable Communities, \$30 Office of Brownfields and Land Revitalization
- Identification of community capacity needs
- Participant listing of possible reuse of brownfield sites
- Engagement of Fresno Youth for Sustainable Communities
- Tool kit for community to advocate for redevelopment



Fresno Youth Council: Brownfield to Urban Garden

- Office of Brownfields and Land Revitalization, \$30K
- Identify potential brownfield sites for urban garden
- Assist youth in conducting environmental history on up to 3 highly potential sites
- Identify potential partners for urban garden support
- Urban Garden Charrette for site design
- Implementation Plan
- Final Report for the Web



Fresno Youth Council



Emeryville Community Organic Garden

EMERYVILLE COMMUNITY ORGANIC GARDEN
WISHES TO THANK THE FOLLOWING FOR THEIR
SUPPORT IN MAKING THE GARDEN
A REALITY IN THE CITY OF EMERYVILLE

- City of Emeryville
- Restaurant
- and many
- other
- businesses
- and individuals
- who have
- supported the garden
- through their
- generous
- donations
- of time and
- resources
- to make the
- garden a
- reality in the
- City of Emeryville
- and to
- provide a
- place where
- we can
- grow our
- own food
- and
- enjoy the
- fruits of
- our labor
- together



